



**Lifu Bicycle Co., Ltd.**

No. 4, Lane 11, Ziqiang Street, Tucheng District,  
New Taipei City 23678, Taiwan  
Tel: +886 2.2268-7367  
Fax: +886 2.2268-1947

Third party brand / product names used herein are used to identify such products and are for descriptive purposes only. Such names may be marks and / or registered marks of their respective owners.

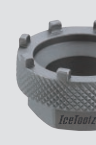
## Headset Wrench

- 36mm / 30x32+36x40mm (4 in1)



## Bottom Bracket

- For Campagnolo® Ultra-torque / Shimano® Hollowtech II / Truvativ® Howitzer / Bosch® Active / Performance Line.
- For Shimano® ISIS Driver® compatible cartridge BBs with 20-tooth in the ring & Chaining Lockring with 8 external notches.
- For Shimano® DU-E5000, E6100, E7000 & E8000 / DU-E6000
- For Hawk Racing™ BB3086™, RaceFace® Cinch™, Rotor® BSA30, Zipp® Vuma™ and other external bottom bracket system
- 3 & 4-notch locking



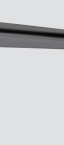
## Crank

- Crank remover, extractor, tools
- Pedal, Axle, Hex Wrench & All-in-1 Track Bike Tool



## Chain Service

- For 1/2"x3/32", 1/2"x1/8" BMX chains, including YBN® Offset Link® chains
- For Shimano® compatible HG/UG/IG chains
- Chain Tool for single speed chain and multiple speed chains



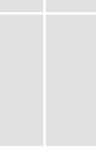
## Shift & Brake

- Cable & Spoke plier, cutter
- Internal Routing Tool, Disc Rotor Truing tool & Disc Brake & Rim Measuring Tool
- Bleed Kit compatible with AVID®, FORMULA®, HAYES®, HOPE®, MAGURA®, and Shimano®



## Hub & Freewheel

- Freewheel Turner with/without Chian Whip
- 1/2" Two-way Ratchet Wrench
- Freewheel / Cassette Tool:  
(a.) For Shimano® MF compatible freewheels & Campagnolo® cassettes & splined 12-tooth bottom bracket cups  
(b.) For Shimano® CS, SRAM, SunRace, Chris King compatible cassettes and Shimano® Center Lock disc brakes.



## Pump

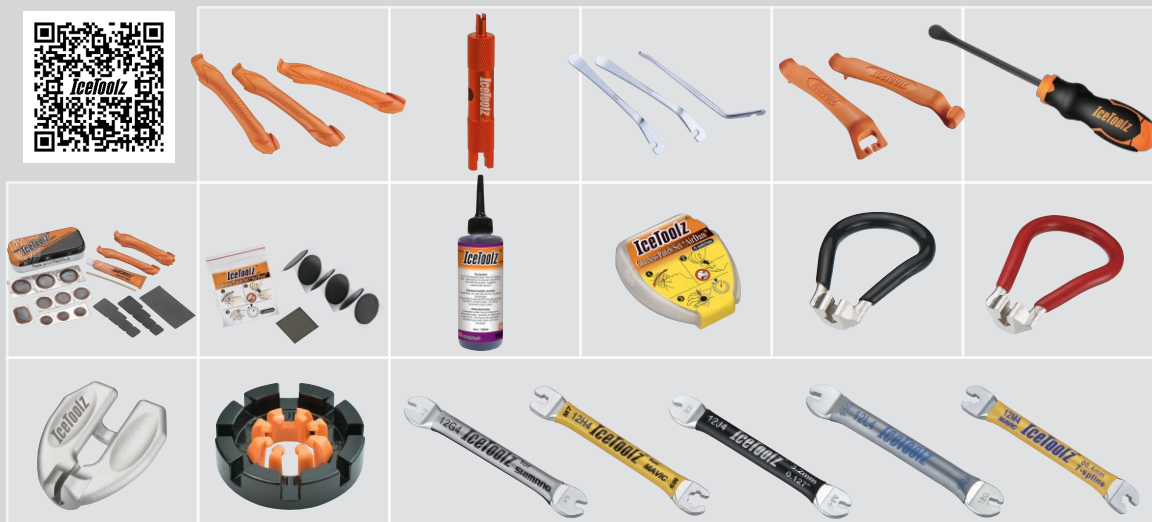
- Air Pressure: 12psi 8.2bar ~ 300psi 20.6bar
- Weight: 80 ~ 1,320gram
- Capacity: 10cm³ ~ 300cm³





## Wheel

- POM / Steel Tire Lever Set
- Tire Puncture Runcture
- Repair Kit / Tire Sealant
- Spoke Tool:  
(1.) For Shimano® & Mavic®  
(6.4mm 7-spline)wheel  
systems  
(2.) For 3.20mm/80  
ga./0.127" nipples or  
3.45mm/80 ga./0.136"  
nipples or 12G / 13G nipples



## General Tools

- 3-Ways with a Screwdriver,  
Star Key Wrench, Hex Key  
Wrench W/ Ballended,  
6-in-1 Wrench
- TwinHead Hex Key / Star /  
Quartet Wrench
- 8x9x10mm / 12x13x14mm Y  
Box Wrench



## Torque Wrenches

- Torque Wrench Set
- One-way / Two-way Torque  
Wrench
- 3~105N·m



## Cleaning/Lube

- Lubricant, Degreaser, Bike  
Wash, Cooper Grease with  
Gun, Boron Nitride Grease  
for Ceramic Bearing,  
Complex Calcium Sulfonate  
Grease for Hub
- Brush Set, Sprocket Cleaning  
Brush & Chain Scrubber



## Multi Tools

- Folding Tools
- Hex 1.5~8.0mm, PH, SL,  
T9~T40, 8~15mm spanner,  
12~15G spoke wrench, 15mm  
pedal wrench, spoke wrench,  
trie lever, chain tool, Bottle  
opener & pouch



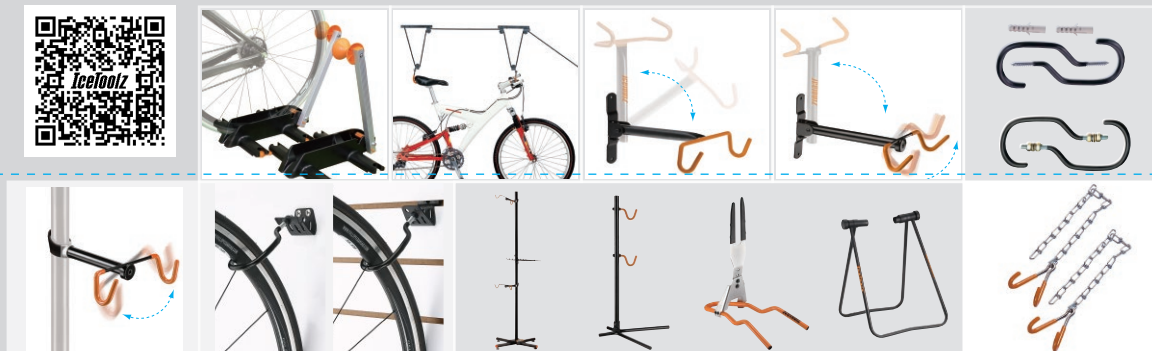
## Tool Kits

- Storage Bottle, Starter  
Tool-Roll, Essence type,  
Ultimate type, Advanced  
Mechanic Tool Kit & Pro Shop  
Mechanic Tool Kit



## Display & Storage

- Storage Stand, Storage  
Chains, Bicycle Lifter,  
Two-way Storage Hook, Rear  
Axle Stand & Display  
Stand



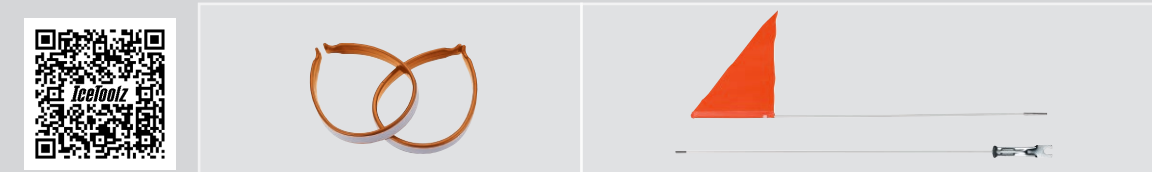
## Repair Stand

- Professional Repair Stand:  
Rotatable clamping  
mechanism holds  
Ø25.4~55mm tubes
- 3-leg stands stable and  
portable



## Safety

- ABS Trouser Clips
- Safety Flag



## Accessories

- Flat Top Cap
- Polo Shirt
- T-shirt

