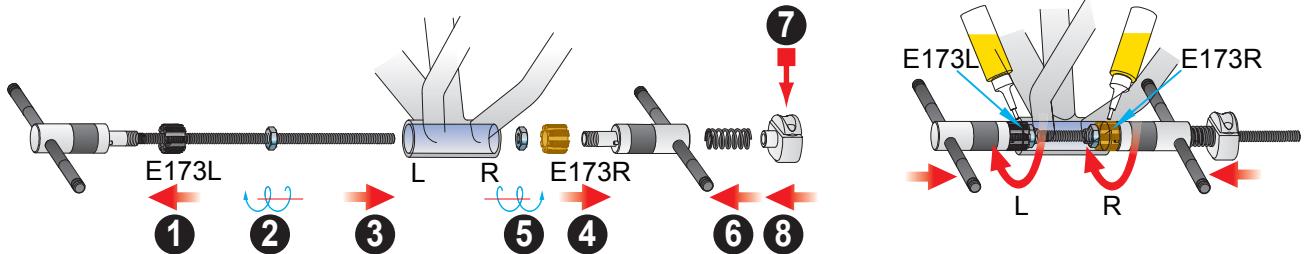


# E185 Head Tube Reaming & Facing

## English Thread

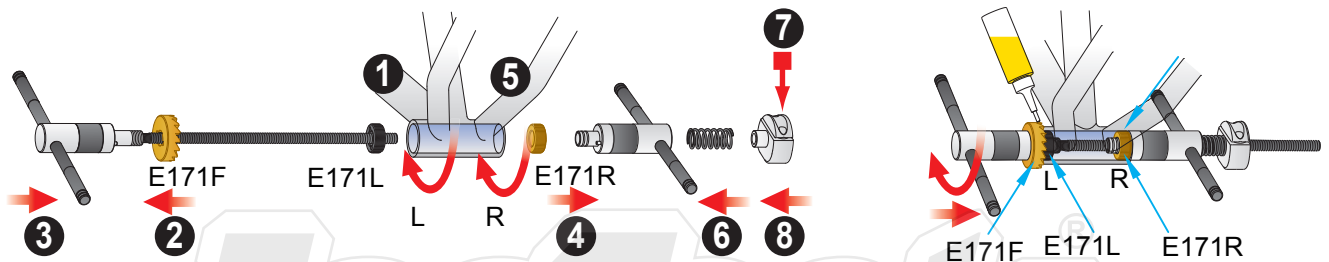
### ▶ Tapping 1.37" x 24TPI

- E173L Tap, English (1.37" x 24TPI), for left side.
- E173R Tap, English (1.37" x 24TPI), for right side.



### ▶ Facing

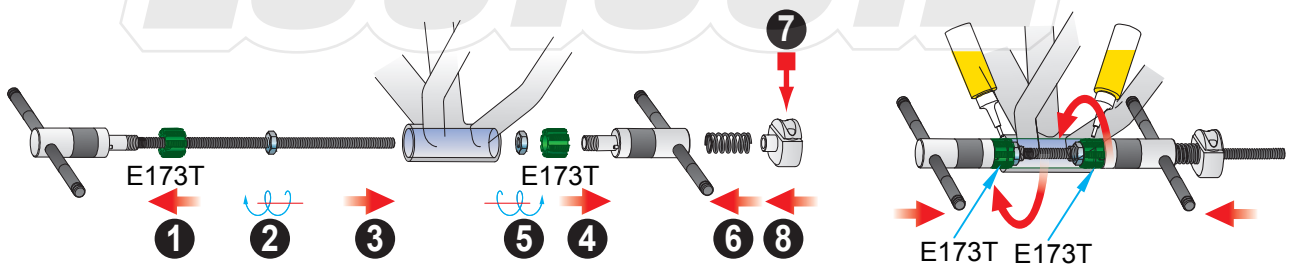
- E171F BB facer.
- E171L BB screw, English (1.37" x 24TPI), for left side.
- E171R BB screw, English (1.37" x 24TPI), for right side.



## Italian Thread

### ▶ Tapping Ø36mm x 24TPI

- E173T Tap, Italian (Ø36mm x 24TPI).



### ▶ Facing

- E171F BB facer.
- E171T BB screw, Italian (Ø36mm x 24TPI).

