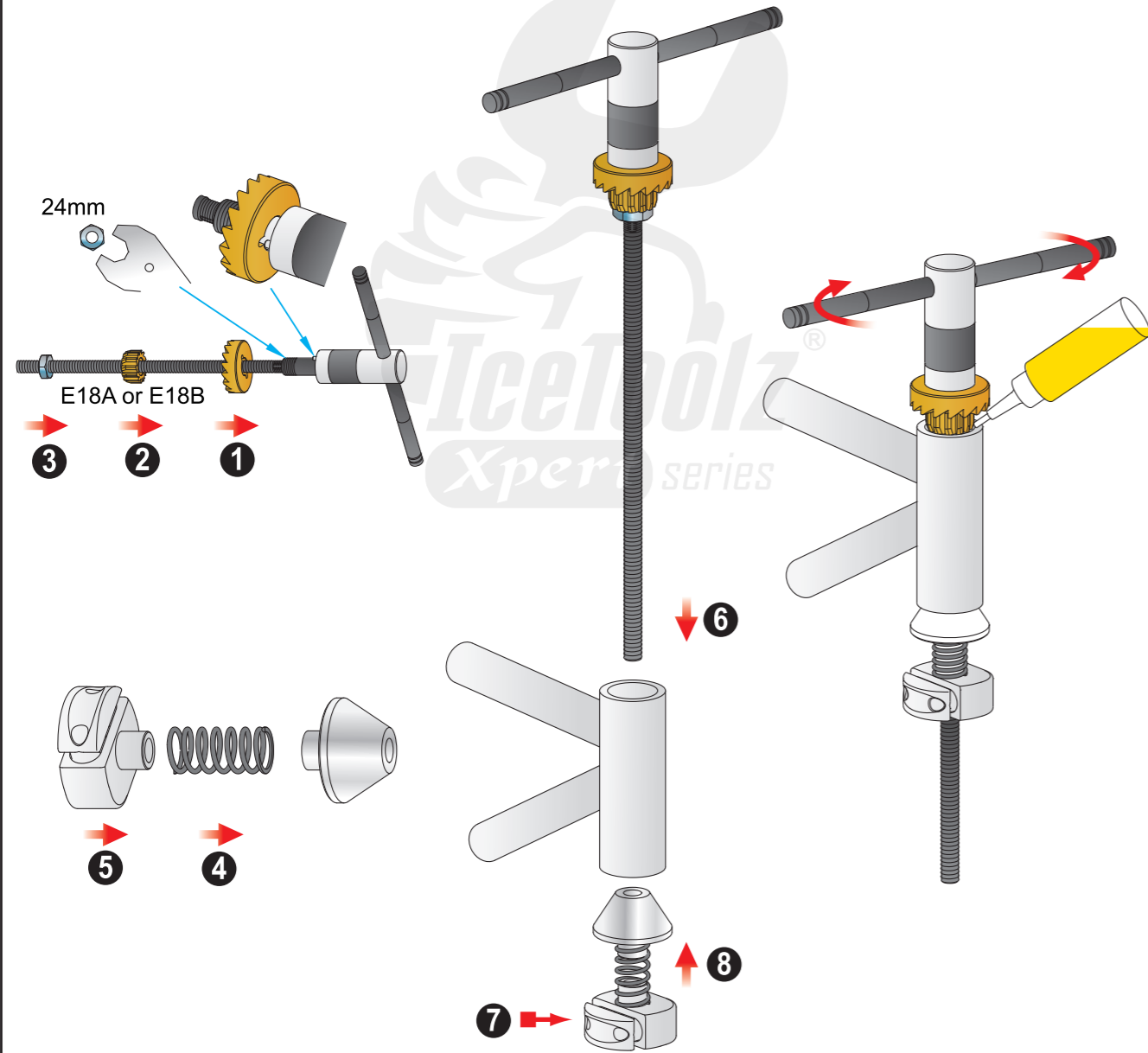


# E185 Head Tube Reaming & Facing

ISO-9001:2008  
QMS Certified

- E18A 1" Reamer
- E18B 1-1/8" Reamer
- E17F Facer
- E17G BB screw (L) English (1.37" x 24TPI)
- E17H BB screw (R) English (1.37" x 24TPI)
- E17J BB screw Italian (Ø36mm x 24TPI)
- E17L Tap (L) English (1.37" x 24TPI)
- E17R Tap (R) English (1.37" x 24TPI)
- E17T Tap Italian (Ø36mm x 24TPI)
- 4724 24mm spanner



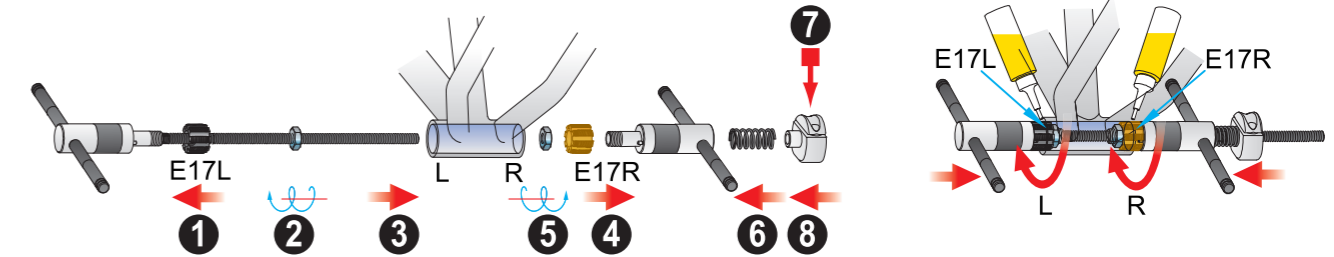
# E185 BB Tapping & Facing

ISO-9001:2008  
QMS Certified

## English Thread

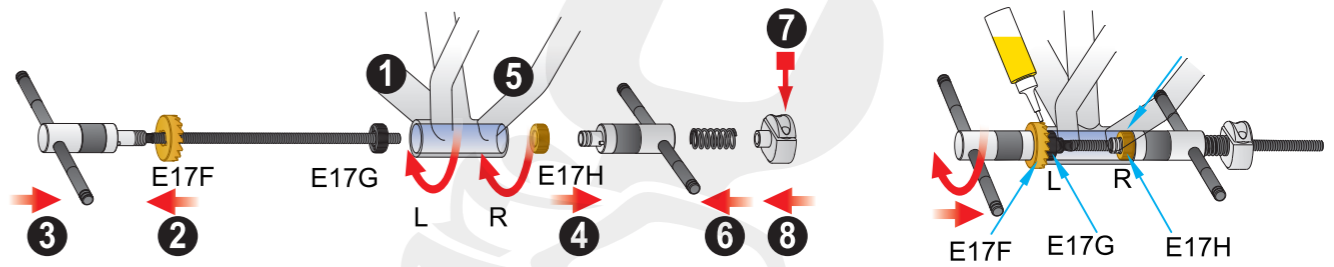
### ► Tapping 1.37" x 24TPI

- E17L Tap, English (1.37" x 24TPI), for left side.
- E17R Tap, English (1.37" x 24TPI), for right side.



### ► Facing

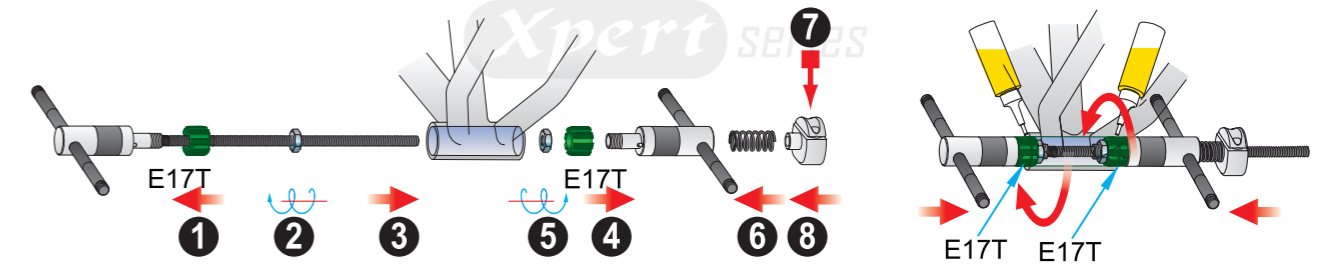
- E17F BB facer.
- E17G BB screw, English (1.37" x 24TPI), for left side.
- E17H BB screw, English (1.37" x 24TPI), for right side.



## Italian Thread

### ► Tapping Ø36mm x 24TPI

- E17T Tap, Italian (Ø36mm x 24TPI).



### ► Facing

- E17F BB facer.
- E17C BB screw, Italian (Ø36mm x 24TPI).

